

# Wireless Wire

1 Gbps full duplex without cables!



1 Gbit  
over wireless

100 m+  
range

60 GHz  
radio

Gigabit  
Ethernet

Paired  
Secure Link  
preconfigured

Powered by  
AF/AT/Passive  
PoE, DC jack

The Wireless Wire offers blazing fast Gigabit speeds for transparent connectivity between two locations, without any sacrifice in your LAN speeds. Simply point the included devices at one another and power them on, they are already preconfigured to connect automatically!

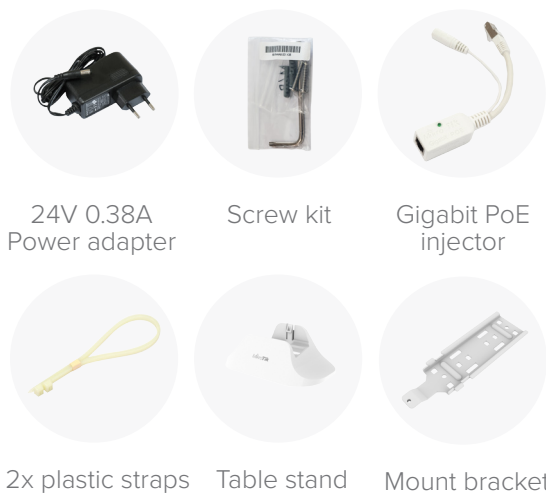
The Wireless Wire works in the 60 GHz spectrum and is not affected by the crowded WiFi frequencies, offering a stable and fast link for distances of 100 meters or more. The kit includes two wAP60G devices that are already paired together with AES encryption, for simple turnkey operation.

## Wireless Wire

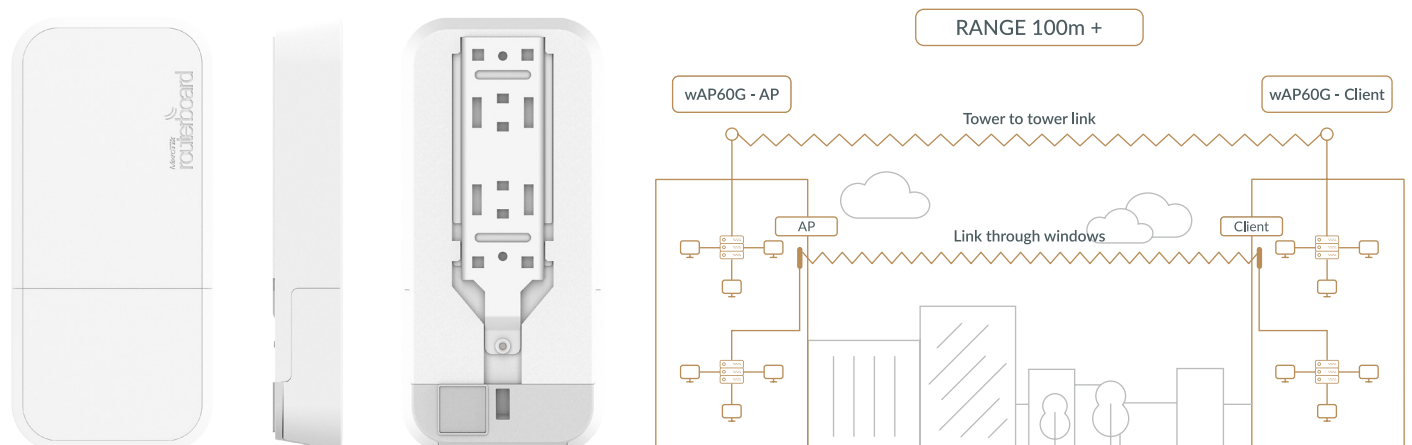
The Wireless Wire is a ground breaking solution which offers fiber speed and quality for a fraction of the price. This amazing kit replaces your Gigabit ethernet cable with two small devices that connect to each other over a 60 GHz wireless link.

Simply point the included devices at one another and power them on, it will make a 1 Gbit full duplex link to instantly replace your cable - this is why we call it the Wireless Wire!

The Wireless Wire makes secure AES encrypted 60 GHz wireless link that is not affected by the crowded WiFi spectrum, offering a stable and fast link for distances of 100 meters or more. The box includes two wAP60G devices that are already paired together, a wall mounting kit, straps for pole mounting and also a pair of table stands for using the devices indoors. The link will even work through most windows, depending on their material.



The box includes a wall mounting kit, straps for pole mounting and also a pair of table stands for using the devices indoors. Penetrates some windows depending on material. For more products and information please visit [mikrotik.com](http://mikrotik.com)!



## Specifications

|                            |                          |
|----------------------------|--------------------------|
| Product code               | RBwAPG-60ad kit          |
| CPU                        | IPQ-4019                 |
| CPU nominal frequency      | 716 MHz                  |
| CPU core count             | 4                        |
| Size of RAM                | 256 MB                   |
| 10/100/1000 Ethernet ports | 1                        |
| Wireless                   | Built-in 60 GHz 802.11ad |
| Antenna beam width         | Phase array 60°          |
| PoE in                     | Yes                      |
| Supported input voltage    | 12 V - 57 V (802.3af/at) |
| Dimensions                 | 185 x 85 x 30 mm         |
| License level              | 3                        |
| Operating System           | RouterOS                 |
| Max Power consumption      | 5 W                      |

